

Pearl Harbor - Gram

Official Publication Of The
Pearl Harbor Survivors
Association, Inc.

National Office—101 East High St.
Jefferson City, Missouri 65101



We are dedicated to the memory of
Pearl Harbor and to those gallant
Americans who gave their lives for
their country on December 7, 1941.

OUR MOTTO: Remember Pearl Harbor - Keep America Alert

Published Quarterly

OUR SEVENTH ISSUE

April, 1966

ASSOCIATION'S INSIGNIA BEARING THE NAME PEARL HARBOR SURVIVORS ASSOCIATION REGISTERED

The association's insignia, which bears the name Pearl Harbor Survivors Association, is registered in the United States Patent Office. This registration is in effect for twenty years from its date of issuance.

The national office requests all members to notify the association's headquarters in Jefferson City if any individual or group of individuals use our name without proper authorization.

USS SACRAMENTO SURVIVOR APPOINTED NATIONAL SECY.-TREAS.

Carl Engstrom, the duly elected Secretary-Treasurer of the association, submitted his resignation to the national office for various personal reasons. Carl was beginning to serve his second term.

John Berlier, who has been state chairman for Indiana for several years, was appointed to fill that vacancy.

John is doing a fine job and I am sure he keeps an eagle eye on the association's funds.

USS SOLACE TO HOLD REUNION

A. J. Zane, a member of the PHSA, reports that a reunion of the crew of the USS Solace, who served aboard her from the date of her commission to the end of the war, will be held on August 13 at the Hotel Taft in New Haven, Connecticut. Any of our members desiring more information on this reunion should contact Mr. Zane, whose address is Jackson Lane, Northford, Connecticut 06472.

LET'S HAVE YOUR IDEAS

Bob White (Ford Island), President of the USS Ward Chapter, has recently met with President Harry Truman regarding the possibility of having a display at the Truman Library of mementos from the Pearl Harbor attack. If any of our members have some article which they believe would be appropriate, please write to the national office and give full details.

After all this material is gathered together, we will again contact President Truman or some of the Truman Library officials and discuss this matter further with them.

DEPOSITS FOR HAWAII RETURN

If you plan to make the return to Hawaii this December you must send your \$40.00 family deposit immediately, but no later than June 1, 1966. We must know how many plan to make this trip so that proper accommodations can be reserved for you.

On April 1, 1966, we reached 66 percent of capacity for the Reunion Banquet in the Monarch Room of the Royal Hawaiian Hotel.

PLEASE send your deposit in today to the Fitzpatrick Travel Service — 8624 Sunset Blvd., Hollywood, California, our OFFICIAL EXCLUSIVE Agent.

FACTS ABOUT PEARL HARBOR

Copies still available of Admiral Kimbels 8 page booklet. If you desire a copy of this publication please write the National Office and enclose a self addressed envelope. There is no charge to members in good standing.

NOTICE

It has recently come to the attention of the National Office that an individual or group of individuals is attempting to organize a tour similar to ours for the purpose of attending the 25th Anniversary of Pearl Harbor. Members should note that any tour other than the one sponsored by the National Association is unauthorized and therefore the National Association can take no responsibility for any representations made by such an individual or group. The National Association will take all legal steps necessary to protect the members from unauthorized representations but does, however, suggest that members thoroughly examine the unauthorized solicitation so that confusion between the authorized tour and any unauthorized tour be reduced to a minimum.

PEARL HARBOR SURVIVORS ASSN.

MEMBER SERVING IN VIET NAM

Mrs. Albert R. Guertin reports that her husband, Captain Albert R. Guertin, is now serving in Viet Nam. He left the United States last September 1st and she is hoping that he will return late in May.

He was first assigned to Saigon and was later transferred to Bien Hoa.

It would be nice if some of the members of our association could find time to write to Captain Guertin, whose address is 159th Engineer Group (Const), APO 96227 San Francisco, California. I know all of our members join Mrs. Guertin in praying for his safe return.

**MAN AND WIFE BOTH PHSA MEMBERS,
HERE IS HOW IT HAPPENED**

Dr. Killough and I were both sent to Hawaii early in 1941, he in March and I arrived in June. Dr. Killough was in the Dental Corps and I in the Army Nurses Corps and we were both stationed at Schofield Barracks, T.H. Our plans to be married early in 1942 were delayed because of the bombing of Pearl Harbor, but we were married on October 14, 1942 in the Schofield Barracks Chapel. Within 10 days following our marriage, Dr. Killough, who had been re-assigned to the 25th Division in early 1942, was shipped out with his Division to the South Pacific and we did not see each other for two years.

I remained in the Central Pacific area and became a part of a team of five nurses and doctors that went from one Island to another to set up new hospitals for units to move in and take over. My headquarters remained at Schofield Barracks, however until 1944. I was also one of five nurses selected to bring back the first boat load of wounded following the bombing of Pearl Harbor arriving at San Francisco on Christmas Day.

In 1944 I was retired with a medical disability and Dr. Killough was returned to the States about the same time. Following the war we set up our home in Russell, Kansas, where Dr. Killough practices Dentistry and I am the Russell County Public Health Nurse.

We have one son, 20 years old, who is presently enrolled in pre-dentistry at Kansas State University.

Dr. Killough has remained in the Active Reserves and now holds the rank of Lt. Col. in the Dental Corps.

**FORT SHAFTER SURVIVOR
APPOINTED STATE CHAIRMAN**

Arnold L. Tibbitts, (Fort Shafter), Hollister Hill, Plainfield, Vermont, was appointed Vermont State Chairman on March 16, 1966.

We certainly welcome this new state chairman since much work must be done in that state to build up our membership. It is hoped that all of our members in this state will assist their new state chairman in the huge task which lies before him.

ALASKA STATE CHAIRMAN APPOINTED

James J. Jones, 1437 Gillam Way, Fairbanks, Alaska 99701 was appointed Alaska State Chairman on March 9, 1966. As everyone realizes, our membership in Alaska is quite small and we were very happy to have Mr. Jones accept this appointment. I am sure Jim realizes that all of us stand ready to assist him in this new office.

PEARL HARBOR SURVIVORS ASSOCIATION, INC.

**Statement of Financial Condition
December 31, 1965**

ASSETS	
Current Assets	
Cash in Bank	\$1,048.07
Petty Cash Fund	100.00
Inventory - Merchandise for Resale:	
Hats (cost)	\$612.00
Lapel Pins (cost)	90.00
Organizational Flags (cost)	165.00
Prepaid Insurance and Postage	59.48
Total Current Assets	\$2,074.55
(A) Fixed Assets	
Office Equipment	225.00
Organizational Flags, Pictures & Films	529.18
Corporate Seal & Trademark Registration	33.00
Total Fixed Assets	787.18
Investments	
Time Certificate Deposit (4 1/4 %)	\$5,000.00
Accrued Interest on Investment	64.08
Total Investments	5,064.08
TOTAL ASSETS	\$7,925.81
LIABILITIES AND NET WORTH	
Accounts Payable	53.35
Surplus and Reserve for Life Membership	7,872.46
TOTAL LIABILITIES AND NET WORTH	\$7,925.81
(A) Fixed assets are listed at cost for items purchased during 1965. Items acquired prior to 1965 are listed at estimated value with the exception of two films acquired by the association at no cost. These two films are recorded at no cost, but are insured for \$250 each.	

NORTH DAKOTA CHAPTER OFFICERS



Left to right: Marcel Saint, Secty; Clayton Johnson, VP; Donald Marman, Trustee; Richard Hauff, Pres.; Duaine Bonham, Treas.; Robert Shapland, Trustee and Ernest Young, Trustee.

PEARL HARBOR SURVIVORS ASSOCIATION, INC.

Statement of Cash Receipts and Disbursements Twelve Months Ending December 31, 1965

Cash in Bank - January 1, 1965		\$ 4,390.30
Add Cash Receipts (1-1-65 thru 12-31-65):		
Initiation Fees	\$2,675.00	
Dues — National Share	7,387.50	
Dues — State or Local Chapter Share	1,958.00	
Dues — District Director Share	489.50	
Boosters Pearl Harbor-Gram	345.00	
Sale of Lapel Pins	882.50	
Sale of Organizational Flags	285.00	
Sale of Hats	610.00	
Sale of Pearl Harbor Stamps	45.50	
Sale of Stationery	90.50	
Charter Fees	150.00	
Misc. Receipts (Sale of Decals, Donations, etc.)	205.30	\$15,123.80
Total Cash to be accounted for		\$19,514.10
Deduct - Cash Disbursements:		
Investment in Time Certificate Deposits (4¼%)	\$5,000.00	
Distribution of Dues to State and Local Chapters	2,474.20	
Distribution to District Directors	645.15	
Purchase of Lapel Pins, die, etc.	776.40	
Purchase of Organizational Flags	450.00	
Purchase of Hats	161.81	
Stationery Expense	777.66	
Postage	1,014.28	
Cost of Publishing Pearl Harbor-Gram (4 issues)	1,007.02	
Purchase of Decals, Constitution, By-Laws and Plaques	756.12	
Office Rent, Clerical Help and Travel Expense	4,173.67	
Purchase of Pearl Harbor Film	250.00	
Publicity Release Expenses	409.99	
Miscellaneous and General Expenses	569.73	\$18,466.03
Cash in Bank, December 31, 1965		\$ 1,048.07

March 31, 1966
To. National Executive Board
Pearl Harbor Survivors Assn., Inc.
Gentlemen:

I have examined the attached Statement of Financial Condition as of December 31, 1965 and the Statement of Cash Receipts and Disbursements of the Pearl Harbor Survivors Association, Inc. for the twelve months ended December 31, 1965. My examination was made in accordance with generally accepted auditing standards and involved a detailed examination of income and expenditures.

I did not verify asset or equity accounts prior to 1965, but did confirm balances as of December 31, 1965. A detailed examination of the bank balance reveals that a number of checks issued to state chairman in 1964 and the beginning of 1965 were outstanding at December 1, 1965.

In order to facilitate record keeping and bank reconciliations, I would recommend establishing a policy concerning checks outstanding over six months which would either recall such checks for cancellation, or have them deposited for the purpose for which they were issued.

In my opinion, the attached statements present fairly the financial condition of

the Pearl Harbor Survivors Association, Inc. as of December 31, 1965 and the results of its operations for the year ended in conformity with generally accepted accounting principles for this type association.

S—Donald Lindenbusch
Certified Public Accountant
Centertown, Missouri

E. G. SIMMELINK APPOINTED KANSAS STATE CHAIRMAN

E. G. Simmelink, (USS West Virginia), of Osborne, Kansas, was appointed Kansas State Chairman on March 25, 1966. This vacancy was caused by Ralph O. Lassman, (USS Medusa) resigning due to his holding three offices in the PHSA, namely: District Director, State Chairman and Chapter President. I am sure that Mr. Simmelink will serve the association well in this new office.

HALEIWA FIELD ADDED TO UNIT LIST

It has recently come to the attention of the national office that an air strip called Haleiwa Field was in existence on December 7, 1941 and many of our survivors were on station at this air strip. This new unit is known as Unit No. 126 in our codification.

98 C A A TO HOLD MEET IN BLOOMFIELD, NEW JERSEY

Rudy Bobella, of 5516 Calumet Avenue, Hammond, Indiana, reports that the 98th C A A will meet in Bloomfield, New Jersey on July 2, 1966. This event is being held to commemorate the 25th anniversary of this organization departing from Fort Eustis, Virginia for Pearl Harbor.

I am sure if any of our members would like to join this group at this time that Rudy would be happy to hear from them. Rudy is a member of the PHSA Indiana Chapter.

ATTENTION PEARL HARBOR WIVES

Dr. Edwin O. Seiser, 223 West Kleberg, Kingsville, Texas, a member of the PHSA, is planning to write a book called "Pearl Harbor Wives." Dr. Seiser states that any of the wives of the PHSA who would be interested in relating their experiences on that tragic day, he would be happy to receive this information to see if it is possible for him to write this interesting book.

Please do not send this information to the national office; send it to Dr. Seiser direct.

NORTH CAROLINA CHAPTER MEETS QUARTERLY

Garland Coats, who was attached to the USS Sumner, is president of the North Carolina Chapter of the PHSA. He reports that they have meetings every quarter and try to hold these in various parts of their state. Programs have been very interesting and are well attended.

Garland's address is RFD 1, Coats, N.C., 27521.

USS NEW ORLEANS SURVIVOR APPOINTED MINNESOTA STATE CHAIRMAN

Ralph E. Krafnick, (USS New Orleans), of R.R. 4, St. Cloud, Minnesota, 56301 was appointed Minnesota State Chairman on March 25, 1966.

This vacancy occurred due to Alvin D. Wilkinson moving to the state of Iowa. All of us join Ralph in wishing him the best of luck in his new office.

DIRECTORY OF NATIONAL, STATE AND CHAPTER OFFICERS

We regret that space limitations made it impossible to publish the complete directory of Officers. All of the information was compiled but we just ran out of space, we plan to publish this in our next issue.

ASSOCIATION HATS

The Official Pearl Harbor Survivors Association hats are available from the National Office. Sizes: Large, Medium, or Small. Price \$6.50.

QUESTIONS AND ANSWERS REGARDING RETURN TO HAWAII DEC. 4-10, 1966

1. When did the Pearl Harbor Survivors Association begin plans for the Hawaiian return?

Plans were begun early in 1963 for the return to Hawaii to commemorate the 25th anniversary of the attack.

2. When was the Fitzpatrick Travel Service selected as the OFFICIAL, EXCLUSIVE travel agency to handle this trip for the Pearl Harbor Survivors Association?

An agreement was entered into between the Fitzpatrick Travel Service and the Pearl Harbor Survivors Association dated November 12, 1963.

3. Is the Fitzpatrick Travel Service properly staffed to handle our tour?

Yes. The Fitzpatrick Travel Service is adequately staffed to properly handle our tour. This agency is well known in Hawaii and they are a member of the American Society of Travel Agents. (ASTA)

4. Is every travel agent a member of the American Society of Travel Agents?

No. Some travel agents cannot meet the requirements necessary for membership in the American Society of Travel Agents.

5. How was the price of the trip determined?

In July of 1964 the National Executive Board authorized the PHSA National President to go to Hawaii to meet with the military, hotel operators, airline representatives, ground transportation operators and many others, so as to determine first hand the problems of such a huge undertaking and to determine the various costs. After the costs were determined, a meeting was held with representatives of the Fitzpatrick Travel Service, the costs were reviewed and the price of \$289.50 per adult determined for those departing from San Francisco or Los Angeles.

6. Does the price of \$289.50 per adult include the usual registration fee necessary to cover incidental expenses?

Yes. The price of \$289.50 per adult includes the registration fee.

7. Can the Fitzpatrick Travel Service alter the price of \$289.50 per adult and the tentative schedule of activities?

No. The Fitzpatrick Travel Service does not have the authority to make any alterations in price, activities or policy as set out by the National Pearl Harbor Survivors Association, Inc., without the express permission of the national office. It is the responsibility of the national office to take such safeguards deemed necessary to protect the financial con-

ANOTHER ARMY NURSE JOINS ASSOCIATION



Mrs. Freda Conine Asmundson, US Navy Nurse Corp, joined our Association late in 1965. Pictured with her is Dale Justice, Secretary-Treasurer of Los Angeles Chapter.

dition of the National Pearl Harbor Survivors Association, Inc.

8. Who pays the travel agent for their services?

The Fitzpatrick Travel Service is compensated on a commission basis by the airlines used and hotels occupied. In addition to the Pearl Harbor Survivors Association receiving all the services of the travel agent free of charge, many benefits and savings accrue to the national office through group travel. These savings are passed on to those making the trip.

9. How long does it take to fly from Los Angeles or San Francisco to Honolulu?

Approximately (5) five hours.

10. What does the \$289.50 per adult provide?

Registration Fee
Round-trip jet air transportation from Los Angeles or San Francisco to Honolulu.
Traditional Aloha Greeting with fresh flower lei on arrival.
Round-trip transfers from airport to hotel.
Tips to airport porters upon arrival and departure.
Tips to hotel bellboys on arrival and departure.
6 nights accommodations at the Moana

or the Princess Kaiulani Hotels (based on double occupancy).

State tax on hotel accommodations.
Aloha Party sponsored by the Pearl Harbor Survivors Association.

Champagne Cocktail Party
Round-trip transfers to Pearl Harbor Memorial Services.

Round-trip transfers and tour to your Base Unit.

Get-together Continental breakfast sponsored by the Pearl Harbor Survivors Association.

Round-trip transfers to Punch Bowl Cemetery.

Pearl Harbor Tour.
Full day Circle Island trip.
Cocktail Party and Final Banquet at the beautiful Monarch Room of the Royal Hawaiian Hotel.

Kodak Hula Show.
Flower Arrangement Classes.
Polynesian Show at the International Market Place.
Hula Lessons.
"Hawaii Calls" Broadcast.

11. What is the costs for those who do not require transportation to or hotel accommodations in Honolulu as provided in the \$289.50 package?
\$70.00 per adult.

(Continued on next page)

12. What does the \$70 per adult provide?

Registration Fee
Aloha Party sponsored by the Pearl Harbor Survivors Association.
Round-trip transfers to Pearl Harbor Memorial Service.
Round-trip transfers and tour to your Base Unit.
Get-together Continental breakfast sponsored by the Pearl Harbor Survivors Association.
Round-trip transfers to Punch Bowl Cemetery.
Pearl Harbor Tour.
Full day Circle Island Tour.
Cocktail Party and Final Banquet at the beautiful Monarch Room of the Royal Hawaiian Hotel.
Kodak Hula Show.
Flower Arrangement Classes.
Polynesian Show at the International Market Place.
Hula Lessons.
"Hawaii Calls" Broadcast.

13. Why is the price more from Portland and Seattle?

Because the jet air fare is \$20.00 more round trip from Portland and Seattle. This service includes a meal and complimentary champagne aloft.

14. Can I purchase tickets to individual functions?

No. All tickets must be obtained under one of the two plans offered, \$289.50 or \$70.00 per adult.

15. Can I get a reduction in price if I do not wish to attend certain functions?

No. The planned trip covers the minimum functions desired by most people for a trip to Hawaii. It is impossible to plan a trip which will meet everyone's individual desires.

16. Will, I as a member, be called upon to work on various functions during this reunion?

Probably not. It is planned to hire a projectionist for the film showing, private security police, etc. It is believed that the members should enjoy every minute of this reunion with their family and friends and should not be asked to take tickets, show films, work at a registration desk, etc.

17. Will the PHSA operate a registration desk?

No. Everyone will be pre-registered before leaving the mainland. The PHSA will have a business office and the Fitzpatrick Travel Service will have an informative booth.

18. What will I need to be admitted to the various functions?

Tickets will be issued for each and every function by the Fitzpatrick Travel

Service. You must have your ticket to be admitted to the cocktail parties, reunion banquet, bus boarding, etc., since it is on this basis that we will pay for those furnishing the services.

19. Will the Memorial Service be open to the public?

This question cannot be accurately answered at this time. As you know, the military does not hold memorial services on December 7, but they are fully co-operating with the Pearl Harbor Survivors Association in this special Memorial Service. Limited accommodations could cause admittance to this Memorial Service to be by invitation only. All of those registered with our travel agent will receive invitations.

20. What hotels will be used?

The hotels selected are two of the Sheraton Complex, the Moana and the Princess Kaiulani. To refresh your memory the Moana Hotel is right on Wakiki Beach — no streets to cross — ideal for youngsters. This is a part of old Hawaii which you will remember. The Princess Kaiulani is across the street from the Sheraton Hotel Corporation.

21. Will there be special activities for teenagers?

Yes. Final plans for these activities have not been completed at this time.

22. Must I make the \$40 family deposit?

Yes, by all means. This is the only way that we can make definite reservations for you. These deposits are logged in by the Fitzpatrick Travel Service according to date of receipt. (You know there are only so many jet aircraft available to go to Hawaii.) If we begin to approach the maximum reservation figure, registration figures will probably have to be made by limiting future reservations to members and their immediate family only and perhaps even more drastic restrictions could develop. Won't you please send your deposit in immediately if you plan to make this trip? Delay in making this deposit can only adversely effect this huge memorable reunion.

23. Will Fitzpatrick Travel Service arrange for transportation from my nearest major airport city to the proper West Coast gateway city?

Yes. The Fitzpatrick Travel Service has all available seats blocked on departing aircraft. They will be able to coordinate your departure from your nearest airport to eliminate waiting time on the West Coast. If you live on the west coast or drive, the Fitzpatrick Travel Service will notify you the flight on which you are booked and it will be your responsibility to be on hand at the proper time.

24. Will all the details regarding the trip be published by the National Office and sent to all members.

No. The National Office publishes the Pearl Harbor-Gram quarterly. As time grows near for departure the Fitzpatrick Travel Service will furnish final details only to those with reservations. This information cannot wait for the publishing time of the Pearl Harbor-Gram.

25. If I have to cancel, will my money be refunded?

All deposits and final payments will be refunded in full on cancellations up to 72 hours before departure. Thereafter a nominal charge will be made to cover costs of cancelling hotel, air space and reservations for scheduled events.

26. What are the Tour Fares for Children?

These depend on the number of children in a family and their ages:

One child under 12 sharing parents' room—\$129.50.

One child over 12 sharing parents' room—\$234.50.

Two children under 12 in separate room—\$179.50 each.

Two children over 12 in separate room—\$279.50 each.

Third child sharing with brothers or sisters same as child sharing with parents.

27. May we go one way by ship?

Yes, you may travel one or both ways by ship. The only passenger service from the West Coast is on Matson Lines SS LURLINE. There is a westbound sailing from L.A. on November 24th, from S.F. on November 25th, arriving in Honolulu November 30th — four days before the air arrival. There is no return sailing around December 10th since the LURLINE will be in drydock the first three weeks in December. Earliest return sailing would be on the MONTEREY December 17th, arriving in S.F. on December 22nd.

28. What is the fare if we go one way by ship?

This depends on the kind of space you select aboard the ship. Total Tour Fares including one way ship and one way air, plus four extra nights at the Hotel in Honolulu (Nov. 30 - Dec. 4) are from \$513.62 for cabin space aboard the LURLINE without private bath and from \$553.62 for space with private bath up to \$713.62 per person.

29. What is the difference between thrift and regular tourist air service?

Seating in both classes is three on each side of the aisle. Regular tourist class serves champagne and a meal aloft; thriftair only coffee or tea. — BUT —

(Continued on next page)

under a new regulation, all members of our group who travel from L.A. or S.F. on the group designated flights on December 4th will receive regular tourist service without paying the \$20 additional fare. Returns may be made individually on the day of your choice up to December 25th.

30. May we extend our stay in the Islands for a few extra days?

Yes, in view of the above you may extend your stay up to Dec. 25th without additional fare.

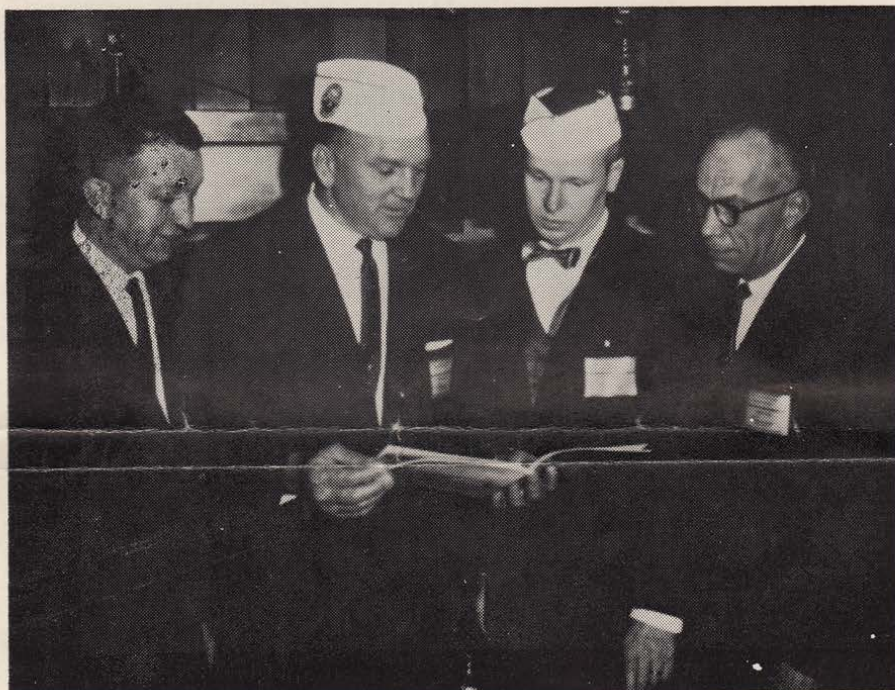
31. May we go over to Hawaii before the group date, Dec. 4th?

Yes, you may travel any day you wish at no additional air fare. However, you will not qualify for the group rate on Regular tourist service, but would travel on the thrift service.

32. Will there be charter flights to the West Coast from any of the major cities in the U.S.?

No. It takes 120 to 150 persons to fill a charter aircraft, and there is no one

NEW YORK STATE REUNION HELD AT GROSSINGERS



Left to right: Vincent Lowe, Binghamton Chapter President; Joseph Hydrusko, 8th District Director; John Kuzma, New York State Chairman; and Wallace Kampney.

Departed Members Of The Pearl Harbor Survivors Association

Prayer for our Dead

Eternal rest grant unto them, and let perpetual light shine upon them and may they rest in peace.

AMEN

GEORGE V. CRUISE
Clearwater, Florida
U.S.S. Helena

WILLIAM P. ROBINSON
Thousand Oaks, California
Fort Shafter

EDWARD L. GRIFFIN
Mauldin, South Carolina
U.S.S. Rigel

EDWARD G. HAMPTON
Marquette, Michigan
U.S.S. Honolulu

MILTON R. WILLIAMS
Vancouver, Washington
U.S.S. Tennessee

RINO A. BRIGHENTI
Athol, Massachusetts
Schofield Barracks

BERNARD J. CULLINANE
Kalamazoo, Michigan
Hickam Field

WILLIAM J. BEAUCLAIR
Minot, North Dakota
U.S.S. Nevada

city from which we anticipate that many persons. However, space aboard regular flights from various large cities will be arranged, for groups of 25 or more traveling together at a 20 percent discount of regular coach fare.

NOTE: Pending at present is an application for excursion round trip fares which will allow a 25 percent discount. If approved by the Government, this new fare will be better than the group fare. In that case, we will reserve space on flights from all cities at times to qualify for this reduction. Briefly, regulations are that passengers must start their flights in both directions between Monday noon and Friday noon or between Saturday noon and Sunday noon; passengers may not return to their point of origin within the same week (Sunday being the first day of the week) and must return within 30 days. Fares will not apply during certain peak travel periods, but would be in effect at the time of the Pearl Harbor trip up to December 21st.

Details on the new excursion fares and/or group fares will be sent to all those booked as soon as the new regulations have been approved and published — so it would be wise to send in your deposit as soon as possible.

33. May friends of members go along on the trip?

Yes, friends and relatives are most welcome. Tour Fares for them are the same as for members.

34. What do the numbered Tour Groups mean?

Navy and Marines will be divided into 8 groups numbered 1, 2, 3, 4, 5, 6, 7 and 8. Army, Air Force and Coast Guard will be divided into 4 groups numbered I, II, III and IV. These groups are merely an arbitrary division for the purpose of scheduling transportation for the various events. It is not necessary to make a choice of group, but if you have a preference as to what day you visit Pearl Harbor, your base unit or go on the Circle Island Tour, please indicate a group number in the space provided.

35. How much baggage may I take?

Baggage allowance on all airlines within the U.S. and on United between L.A. and S.F. and Honolulu is 2 bags per person — one the height plus width plus depth of which may not exceed 62 inches, and one not to exceed 55 inches — plus any small bag such as a ladies cosmetic case or an airline bag small enough to be carried on and stowed under the seat. On Pan American from

(Continued on back page)

**Pearl Harbor Survivors Association
Boosters**

(Minimum donation of \$10.00 will
carry your name or firm name for
period of 1 year.)

CENTRAL MISSOURI TRUST CO.
Jefferson City, Missouri

8th DISTRICT DIRECTOR
Joseph Hydrusko

JOSEPH K. GROVES
5355 W. North Ave.
Chicago, Ill. 60639
Formerly Sgt. - Marine Det.
U.S.S. West Virginia
637-8608

ROYAL BEAUTY SALON
Millie Sinnott
Spokane, Washington

ASST. DIRECTOR DISTRICT 7
Jim E. Ferguson
Cincinnati, Ohio

MAR KAY MANUFACTURING CO.
1300 Lewis Street
St. Louis, Missouri
William Hudson, Owner; Tom Hudson,
General Manager; Bill and Tom are
both Pearl Harbor Survivors.

JOHN PETERSON LUMBER CO., INC.
Survivor, USS Medusa
John Peterson
Park Falls, Wisconsin

SHANE REALTY
6488 Central Avenue
St. Petersburg, Florida
"Hank Shane" Director, Dist. 6

MIDWAY LOUNGE
1768 So. Missouri Ave.
Clearwater, Florida
John Andrews. A P.H. Survivor

RUBY COMMERCIAL COMPANY
Ruby, Alaska
John J. May
Survivor from Hickam Field

B and B PLUMBERS
Los Angeles, California
H. H. Juhl
Survivor of the U.S.S. California

HEINRICH SPECIALTY COMPANY
1525 South Sunol Drive
Los Angeles, California
Supplier of our Hats, Decals
and Lapel Pins

MARTY SOMMERS
94 Charles Avenue
Massapequa Park, L.I.
New York
USS Maury

"TELEVISION HOSPITAL"

8 East Bay Drive
Largo, Florida
Wm. "Chicken" Collins, a P.H. Survivor

KEN'S HIDE-AWAY
Budweiser-Tap
Norwalk, California
Kn Kaup, Prop.
USS Widgeon

BEARDSTOWN WATER CONDITIONERS
406 W 9TH
Beardstown, Illinois
Lyle Kuhn, USS Ramsay

**LITTLE'S AUTO SERVICE
AND SUPPLY**
14521 11th N. E.
Seattle, Washington
Clinton B. Little
Survivor USS West Virginia

DAN BRANDT SIGNS
4216 Clinton Avenue
Richmond, California
"Ex-Naval Air Service"

QUEE'S GOLDEN GATE LANES
11490 San Pablo Ave at Hill St.
El Cerrito, California

GEORGE E. SAUNDERS
Richmond, California
U.S.S. Ralph Talbot DD 390

JOE N. LARSON MMC Ret.
INSURANCE SERVICE
Spooner, Wisconsin 54801
U.S.S. Helena CL 50

ATTENTION
ALL PEARL HARBOR SURVIVORS
STATE OF CALIFORNIA
GREATER BAKERSFIELD AREA
CHAPTER 5 WILL
HOST YOU IN YOUR
25TH COMMEMORATIVE
ANNIVERSARY
STATE CONVENTION
at the famous
HACIENDA MOTEL
Bakersfield, California
July 30, 1966

BLUE SPRINGS MARINE
Blue Springs, Missouri
Paul Rand, M.M.L.C. (Ret.)

LLOYDS FLOWER SHOP
2810 R. D. Mize Road
Independence, Missouri

**HAWTHORNE RESTAURANT &
SERVICE STATION**
14440 E. 40 Hiway
Kansas City, Missouri

HAROLD & BETTY'S DRIVE-IN
40 Hiway
Blue Springs, Missouri

SNYDER INSURANCE SERVICE
Blue Springs, Missouri
Complete Line of Insurance
Call Don AC 9 3327

LOWE DRUG COMPANY
Spot and Dick Lowe
Blue Springs, Missouri

JOHNNY'S TEXACO SERVICE
40 Hiway and 7
Blue Springs, Missouri
John Beal Bataan Death March Survivor

WILSON WINCH
Prescriptions
Blue Springs, Missouri

LOUIE & PAUL'S BARBERSHOP
1003 Main
Blue Springs, Missouri

**HAWTHORNE RESTAURANT AND
SERVICE STATION**
40 Hiway and Noland
Independence, Missouri

OK TIRE STORE
Lee McNew
Blue Springs, Missouri

BLUE SPRINGS HARDWARE
G. C. Garrett MMC USN (Ret)
Blue Springs, Missouri

PERCY BYRON
MASON CONTRACTOR
Lake Geneva, Wisconsin
Survivor - Wheeler Field

**GUILBEAU'S PACKAGE LIQUORS &
SERVICE STATION**
Port Sulphur, La.
R. A. Trahan U.S.S. Breese

**CALIFORNIANS PLAN BIG STATE
REUNION IN BAKERSFIELD**

Henry Lidgett, convention chairman and his committee report that much progress is being made in cooperation with the Bakersfield convention bureau to bring to this city the opportunity of having the largest and most enthusiastic response to a call-for-convention in the history of our State's Association.

Steps are being taken to cultivate an interest by survivors throughout the State who are not now members. Bakersfield will host the convention July 30th at the famous Hacienda Motel in this the year of the 25th anniversary of the attack.

By co-incidence, it is also the centennial anniversary of Kern County, the setting for this years reunion. So . . . STAND BY for SURPRISES, GALA EVENTS, MARDI GRAS MOODS, CARNIVAL THRILLS and the warmth of the bond that brings us together.

L.A., S.F., Portland or Seattle allowance is 66 lbs. in tourist or thrift class and 77 lbs. in first class, regardless of number of pieces of luggage.

36. When is deposit due? When is full payment due?

Deposit of \$40 per family is due as soon as convenient. Final payment will be due on Oct. 21st. A bill for this payment will be sent to everyone before that date.

37. When and how will we receive our tickets?

After final payments have been made, about two weeks before departure all air tickets, schedules, complete instruction and information sheet, and other pertinent documents will be mailed to you.

WE HOPE TO SEE YOU ALL IN
HAWAII! ALOHA!

UNIT LISTS

Unit Lists are available from the National Office, they are yours for the asking. If you would like a list of buddies who were attached to your unit who have joined our association, just write to the National Office and enclose a stamped self-addressed envelope. Only members in good standing will receive these lists.

LIFE MEMBERSHIP OPEN

New members desiring Life Membership must pay \$50. This includes the \$5 Initiation fee. Existing members who have paid their current years dues must remit \$40.00. This offer will remain open until officially changed by the Executive Board and notice published in the Pearl Harbor-Gram.

LAPEL PINS AVAILABLE

Lapel pins are now available from the national office at a cost of \$5.00 each.

If you desire one of these pins please forward check payable to the Pearl Harbor Survivors Association and the lapel pin will be mailed to you within a few days.

ORGANIZATIONAL FLAGS AVAILABLE

Official Pearl Harbor Survivors Association flags are available from the National Office. These flags are approximately 45 inches by 68 inches. The flags are constructed using 100 percent white rayon taffeta, and are dry cleanable. Price \$15.00. Allow two weeks for delivery.